

**Practical Information for the
GEOECOMAR 2010 International Symposium
RIVERS – DELTAS - SEAS**

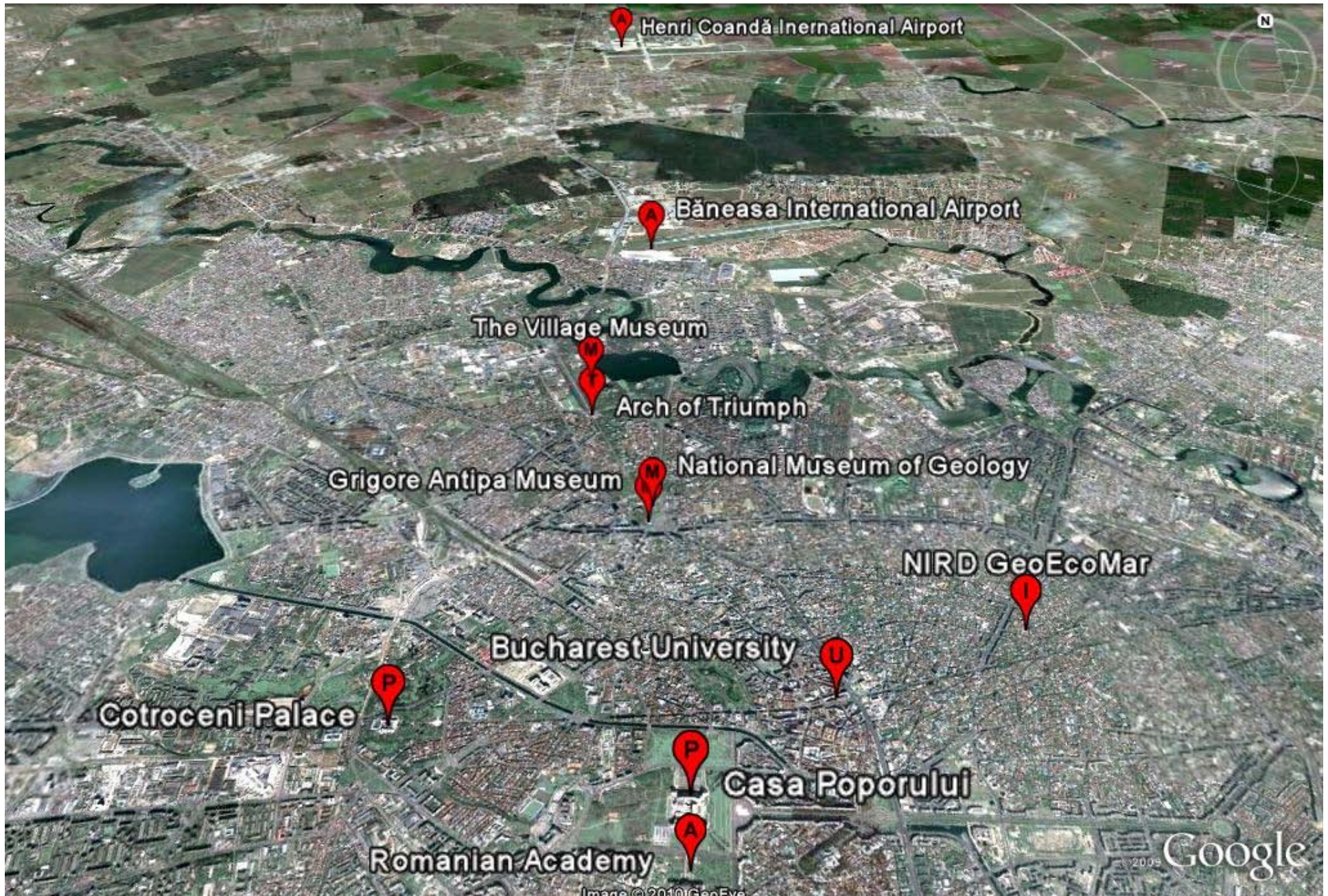
and

**ECOPORT 8 – The 2nd Transnational
Meeting” and 3rd PAN – European FORUM**
(under the auspices of GEOECOMAR 2010 International Symposium)

participants



Several benchmarks in Bucharest



HOW TO GET TO THE CENTRE OF BUCHAREST FROM THE AIRPORTS:

OTOPENI INTERNATIONAL AIRPORT BUCHAREST (“HENRI COANDA”)

(located ~ 20 kms far from Bucharest)

Downtown can be reached only by Taxi or public transport bus (Express Line 783).

Taxi: Only One Company Operating (**Euro Fly**) With Higher Costs Than the Others (~ 0.82 Eur/KM). Estimated taxi fare: 40 – 50 Euros.

<http://otp-airport.ro/index.php?cat=16&article=55>

Expres Line 783: tickets can be bought inside the airport, in front of the Domestic Flights Terminal – bus stop outside, cost of the ticket (2 way-trip – magnetic card): 7 RON (~1,64 Eur).

Bus timetable:

Monday-Friday

05:30-20:00 (every 15 minutes)

20:30-23:00 (every 30 minute)

Saturday, Sunday and legal holidays

05:30-23:00 (every 30 minute)

(more info about the route at <http://otp-airport.ro/index.php?&cat=16&article=54>)

HOW TO GET TO THE CENTRE OF BUCHAREST FROM THE AIRPORTS:

BANEASA INTERNATIONAL AIRPORT BUCHAREST (“AUREL VLAICU”)

This is the old airport of Bucharest, closed down 20 years ago and re-opened only in 2004 for cheap flight companies. The airport is very small and crowded, but has the advantage that it is not far from the city centre. For participants leaving from Baneasa – please take into account the fact that it is overcrowded and there are only few check-in points, generally with long crowds – so please be prepared to wait. Same about passport and security controls – long queues also to be expected for.

Downtown can be easily reached by Taxi or public transport.

By Taxi – numerous companies operating, price per km – average 0,5 Eur, please find details below. Estimated average price to the conference venue ~ 15 - 20 Eur

By bus: Bus 131 right in front of the airport – crosses the centre of Bucharest from North to Piata Romana. Price: 1.5 RON/one way (~ 0,3 Eur). General map of public transport in Bucharest at:

<http://www.ratb.ro/download/harti/autobuze.pdf>



ADVICES

- IMPORTANT NOTICE FOR PEOPLE TRAVELLING BY PLANE:
EXCHANGE RATES IN THE AIRPORTS OF BUCHAREST ARE NOT
CONVENIENT!!

- THE AVERAGE EXCHANGE RATE AT EXCHANGE OFFICES OR BANKS
IN BUCHAREST IS ABOUT 4.3 RON/ 1 EURO (STRONGLY SUGGEST TO
CHANGE MONEY IN BANKS FOR YOUR FINANCIAL SAFETY).

- NEVERTHELESS, IN AIRPORTS EXCHANGE RATES ARE LOWER!! SO
IT IS BETTER NOT TO CHANGE MORE THAN 40-50 Eur IN AIRPORTS. OR
USE ATM'S (BANCOMATS) INSTEAD



TRANSPORT IN BUCHAREST:

Car traffic in Bucharest is extremely difficult (and many times chaotic). For people staying in the central part of town it is strongly suggested to choose the “walk” option, as in most cases at rush hours it's the fastest way.


Taxies in Bucharest are generally not expensive (prices varying for different companies between 0,33 – 0,4 Eur/km, with a starting sum of 0,3 Eur). Several Taxi companies who offer good services for this money are: Meridian, Taxi 2000, General Taxi, Flamingo, Cobalcescu, Perrozzi, Cristaxi, Apolodor, Leone, Speed, Total, D'Artex, Mondial.

Please look carefully first on the cars' doors – as prices are listed there. Normal price/ km is of 1.4 RON.

Remember that at the end of a trip taxi drivers generally expect a tip of ~ 10% from the fare.

TRANSPORT FROM AIRPORT – HOTEL TEMPO / TRIANON:

Express Line 783

Airport Henri Coanda / Baneasa  **University Square**
~ 1 hour

Trolleybuses 66, 69, 85, 70, 90, 92

University Square  **Armeneasca Station**

(second station going EAST from University Station)

(Hotel TEMPO)

~ 5 minutes (second station from Univ. Square)

(estimated with good traffic but heavily depending on traffic jams)

Trolleybuses 66, 69, 85, 70, 90, 92

Kogalniceanu Station  **University Square**

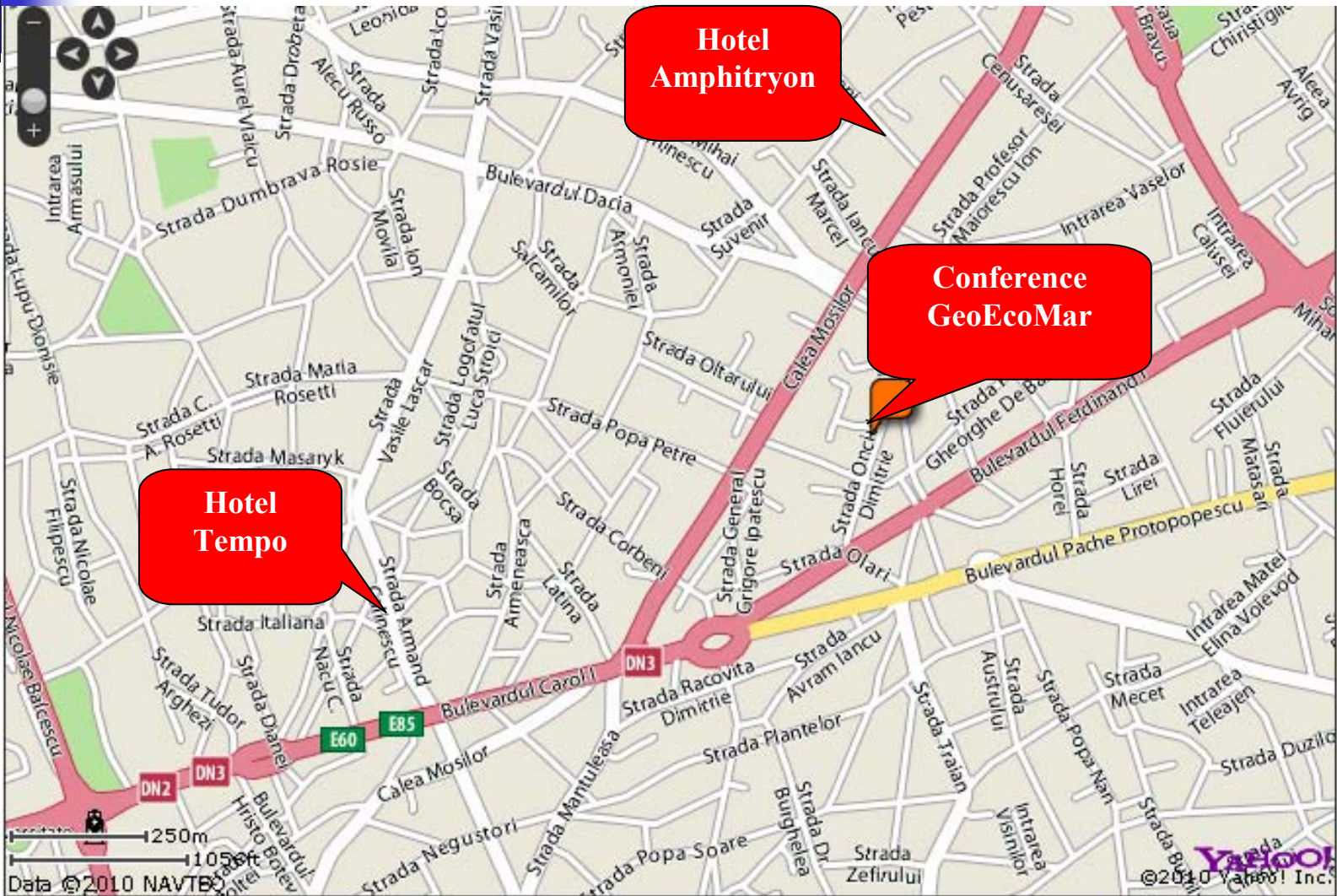
(second station going WEST from University Station)

(Hotel TRIANON)

~ 6 minutes (second station from Univ. Station)

(estimated with good traffic but heavily depending on traffic jams)

Tempo and Amphytrion Hotels and GeoEcoMar Locations



Romanian Academy and Trianon Hotel



HOTELS' ADDRESSES



Tempo Hotel ***

Armand Calinescu Nr. 19 Sector 2
BUCHAREST/ROMANIA

T.: +40 21 310 12 16 F.: +40 21 310 12 41 E-mail:
info@tempohotel.com , <http://www.tempohotel.com/>



Amphitryon Hotel ***

Ardeleni Nr. 2 - 4 Sector 2
BUCHAREST/ROMANIA

T.: +40 21 2016510
F.: +40 21 2016512 <http://www.hotelamphitryon.ro/>



Trianon Hotel ***

Grigore Cobalcescu Nr. 9, Sector 1
BUCHAREST/ROMANIA

T.: +40 21 311 49 27
F.: +40 21 316 22 81, www.trianonhotel.ro

21 October – Opening “GEOECOMAR 2010 International Symposium and ECOPORT 8 – The 2nd Transnational Meeting”

**CONFERENCE HALL -
ROMANIAN ACADEMY OF
SCIENCES:**

Calea Victoriei No. 125

**LOCATION: point no. 1 on the
map**

**Attention – Not the old early XXth
Century style building but the new
one!
(Romanian Academy Library
building).**



21 and 22 October - GEOECOMAR 2010 International Symposium

Session: Rivers – Deltas - Seas

**CONFERENCE HALL -
ROMANIAN ACADEMY OF
SCIENCES:**

Calea Victoriei No. 125

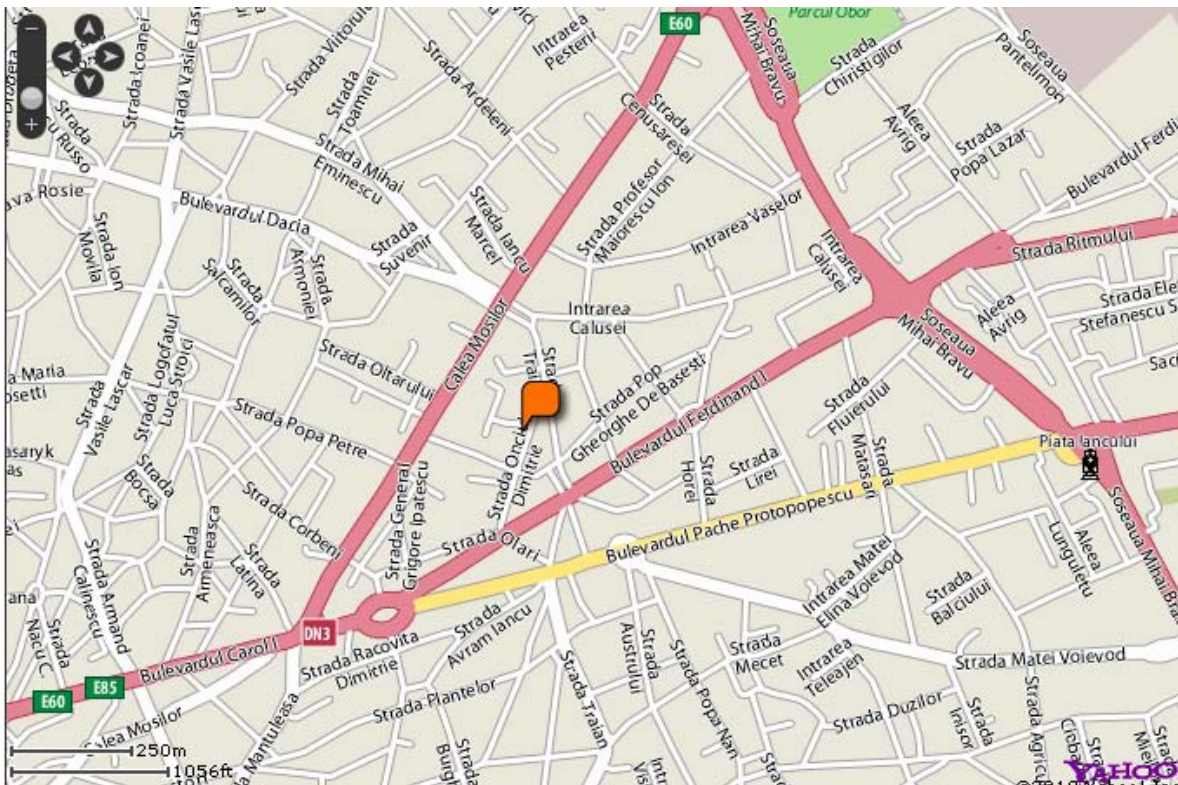
**LOCATION: point no. 1 on the
map**

**Attention – Not the old early XXth
Century style building but the new
one!
(Romanian Academy Library
building).**



**21 October – ECOPORT 8 – The 2nd
Transnational Meeting” Alternative Session of the
“GEOECOMAR 2010 International Symposium**

**CONFERENCE HALL - main building, 3rd floor.
National Research and Development Institute for Marine Geology and
Geoecology
23-25 Dimitrie Onciul Street**

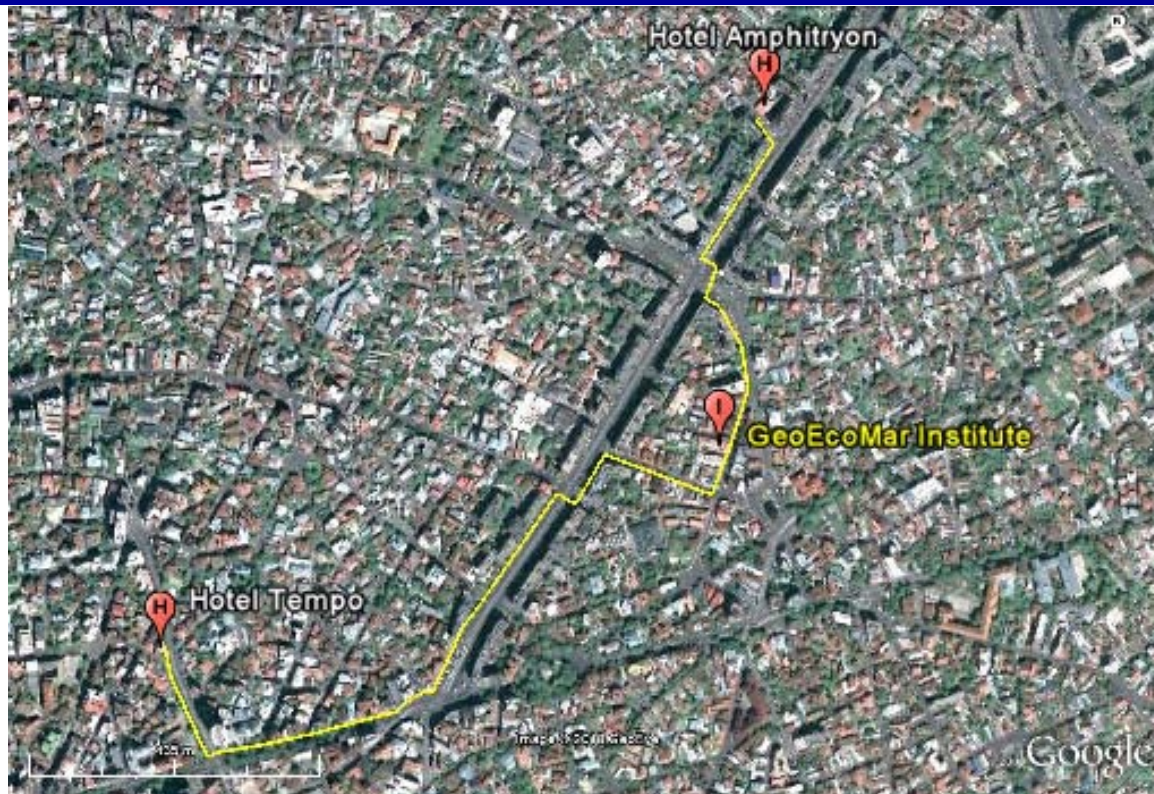


The **INSTITUTE** is located near **FOISORUL DE FOC** (the old firemen's observation tower) and when getting here is easier to ask people about "Foisorul de Foc" area. It is a newly reconsolidated 3 floored building painted in yellow.

<http://www.geocomar.ro/website/contact.html>

**22 October –ECOPORT 8 3rd PAN-European
FORUM meeting**

**CONFERENCE HALL - main building, 3rd floor.
National Research and Development Institute for Marine Geology and
Geoecology
23-25 Dimitrie Onciul Street**





OTHER INFORMATION

On line maps of Bucharest available at:

http://www.romaniatourism.com/maps/bucharest/bucharest_map.html

<http://www.bucharest-map.com/index.php>

<http://www.hartionline.ro/buc/harta/0.html>

Restaurants:

In the centre of Bucharest there are many restaurants, bars, pubs, etc. The average price of a meal varies between 15 and 25 E (depending on the order, of course). Generally, waiters expect to be tipped an extra 10%.

PLEASE REMEMBER THAT MOST OF RESTAURANTS, PUBS AND BARS ACCEPT ONLY CASH PAYMENT. PAYMENT BY CREDIT CARD IS NEVERTHELESS POSSIBLE IN SOME PLACES (GENERALLY MORE EXPENSIVE). PLEASE REMEMBER TO ASK ABOUT THIS AT THE BEGINNING.

You can check some places at: <http://www.bucurestiwww.ro/>



OTHER INFORMATION

Temperature:

Generally, weather in Bucharest by late October is still sunny, with temperatures varying from 8 – 10°C during night to 20°C during day, but surprises may also occur. So remember also to have something warmer in the luggage.

Security:

Bucharest is generally a bit safer than many other big cities. Nevertheless beware of pickpockets in crowded areas, public transport etc. Remember not to change money on the streets (preferably in banks or at ATM's)!

ATTENTION! THE PRICES MENTIONED IN THE MATERIAL ARE INFORMATIVE!

One of the effects of the EU integration has been a steep increase of prices in almost anything, so some prices may vary.

Suggestions for visiting:

- 1. The Palace of Parliament**
Situated downtown
Surface – 330.000 m²



The Palace of Parliament is the second largest building in the world. It was conceived by megalomaniac Communist dictator Nicolae Ceaușescu



Suggestions for visiting:

2. Bucharest Village Museum



One of the most original and fascinating museums, contains an amazing collection of original peasant homes drawn from around Romania.



Spaces are designed more multiple uses--unsurprising since most homes only have two rooms. Colorful special items, like dresses and rugs, are displayed on the walls of the house to personalize it and add decoration. Beautiful, intricate details, like carved wooden fenceposts and gables characterize the homes.

Suggestions for visiting:

3. COTROCENI PALACE



The Cotroceni Palace is a part of the Cotroceni National Museum which is a specialized institution focused upon reflecting the history of the Medieval and Modern Cotroceni, upon the evolution and transformations that came up in time.



The Cotroceni palace, church and monastery reflect a three-century history that interweaves political, military, diplomatic, religious and cultural aspects, directly with the general evolution of Romanian society.

*YOU ARE
WELCOME TO
BUCHAREST!!!*

